

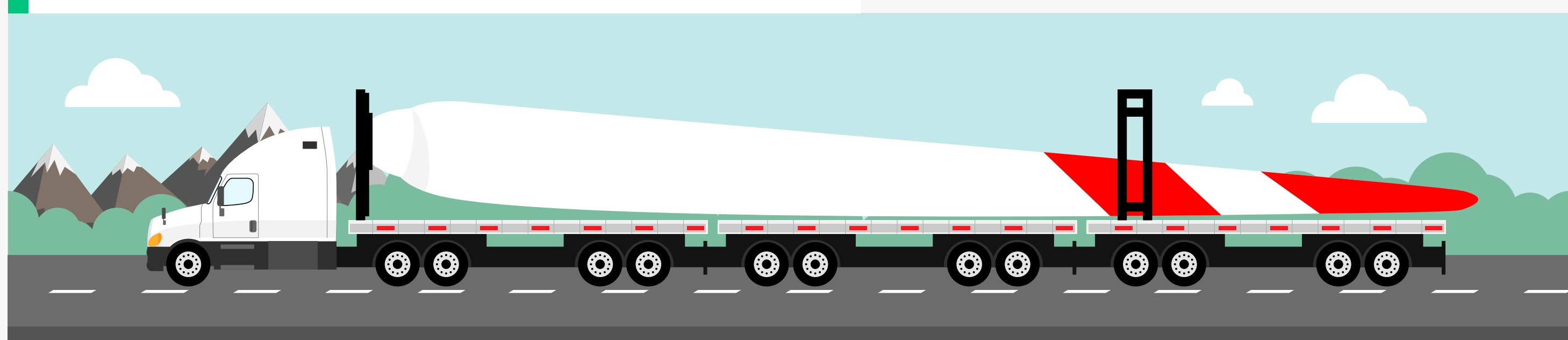
# BLADE LIFTER: THE TECHNOLOGY ENABLING WIND TURBINES TO CONQUER MOUNTAINS

The new system, already being successfully tested in various wind farms around the world, allows blades to be transported with much smaller and more maneuverable trailers.

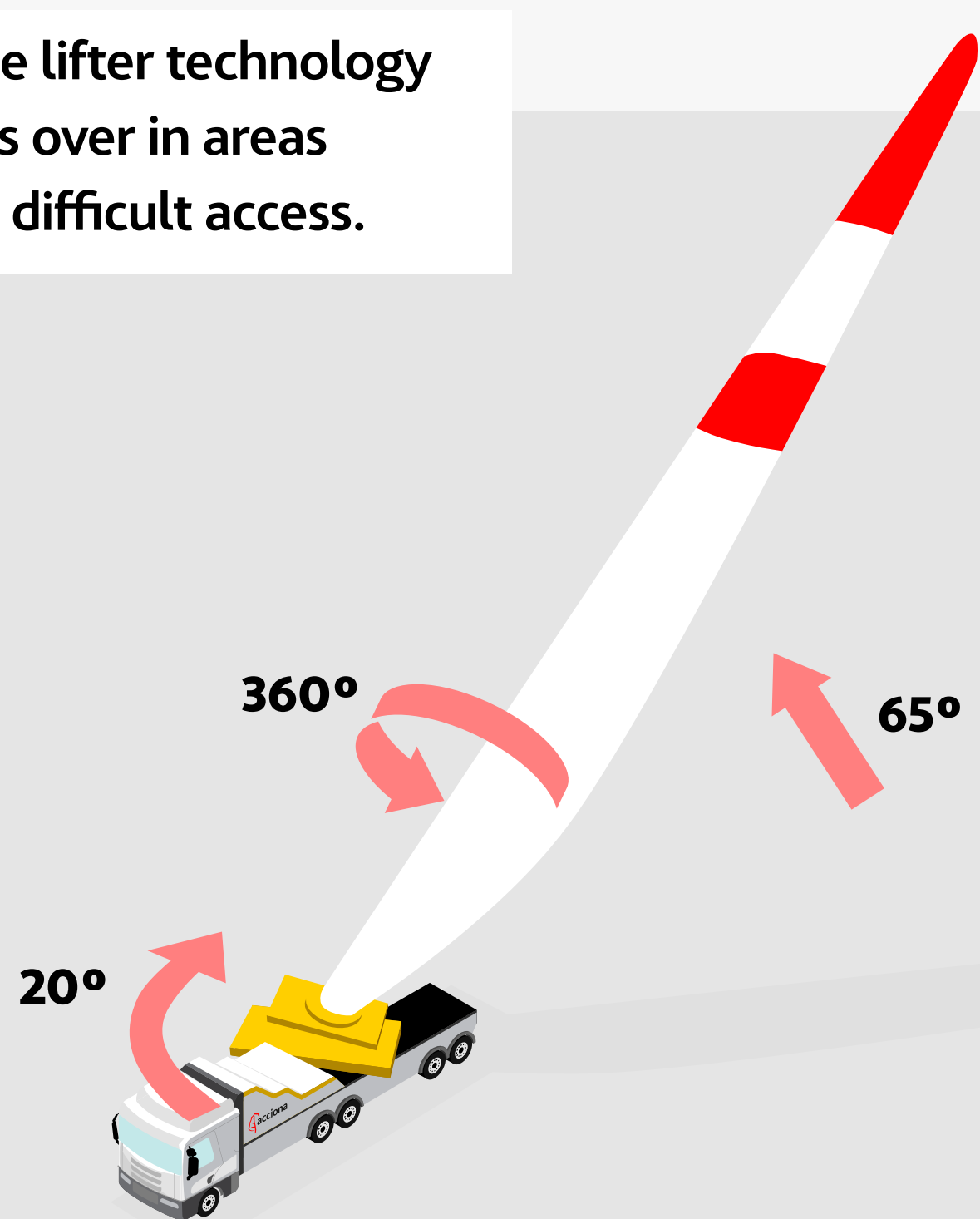


## FROM CONVENTIONAL BLADE TRANSPORT TO BLADE LIFTER TECHNOLOGY

This was the standard transport method until now.



Blade lifter technology takes over in areas with difficult access.



**65°**

Elevates the blade in narrow passages

**20°**

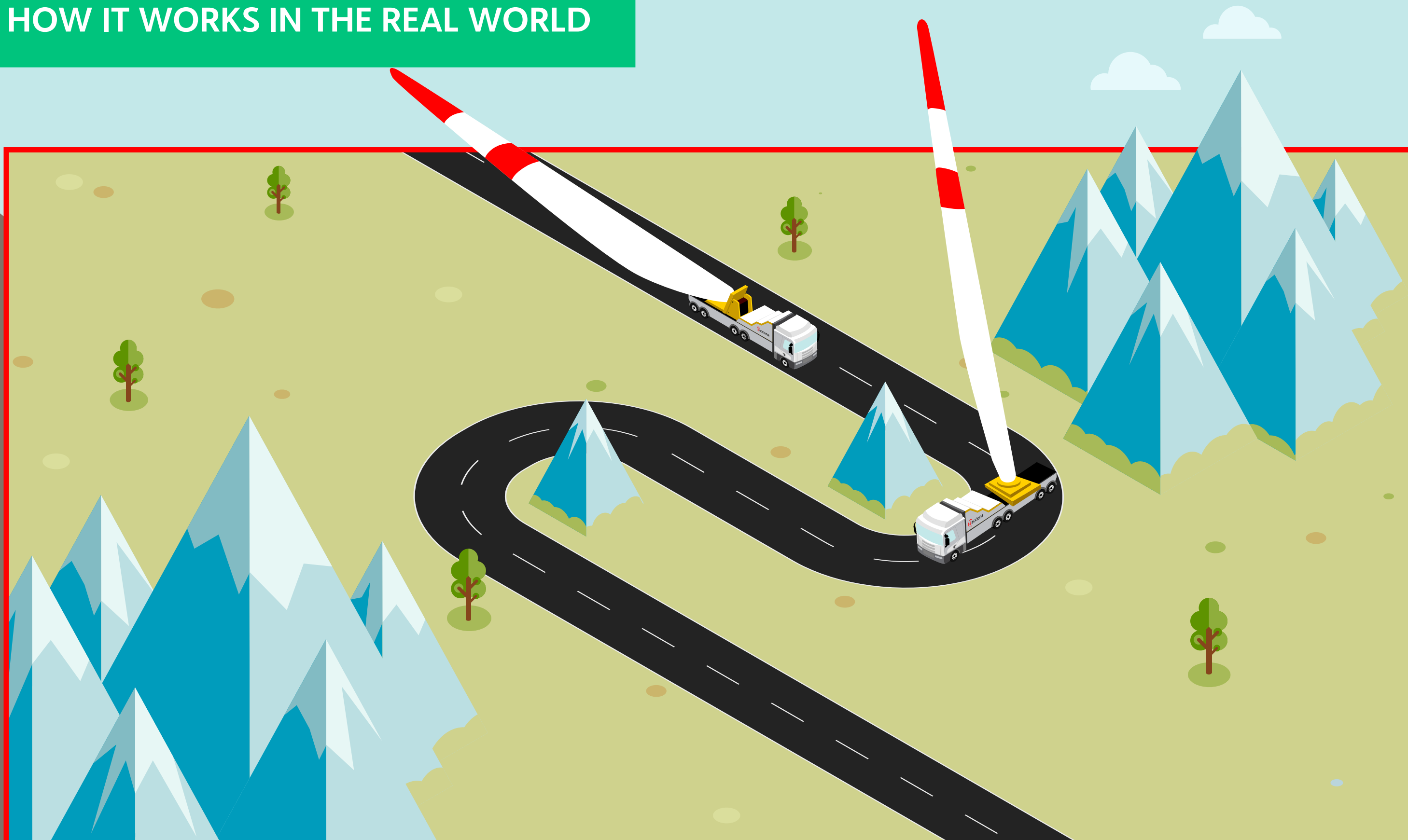
Increases maneuverability even further

**360°**

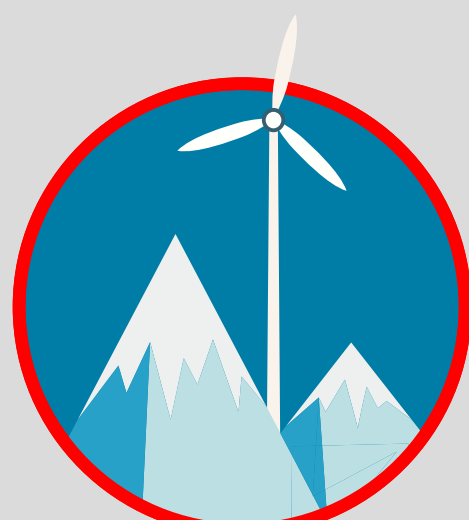
Minimizes aerodynamic drag

Up to **85** meters in length.

## HOW IT WORKS IN THE REAL WORLD



## MAIN ADVANTAGES OF BLADE LIFTER TECHNOLOGY



**Installation** in previously inaccessible areas.



**Cost reduction** by utilizing existing routes.



**Reduced environmental impact** by avoiding terrain modifications.